

## License Management in the ZIE Trans Admin Console



The ZIE Trans administrative interface allows for the management of connections and troubleshooting for ZIE Trans Web applications. The left navigation frame includes two key panels under the **License Management** section for overseeing license details:

- **License Usage Panel:** Monitors license usage across all application servers within a node. ZIE Trans records the number of connections made to host or database resources and logs an alert if the number surpasses the purchased licenses.
- **License Settings Panel:** This panel defines the type of license in use, such as an authorized user or value unit. For an Authorized User license, the number of available licenses should be specified.

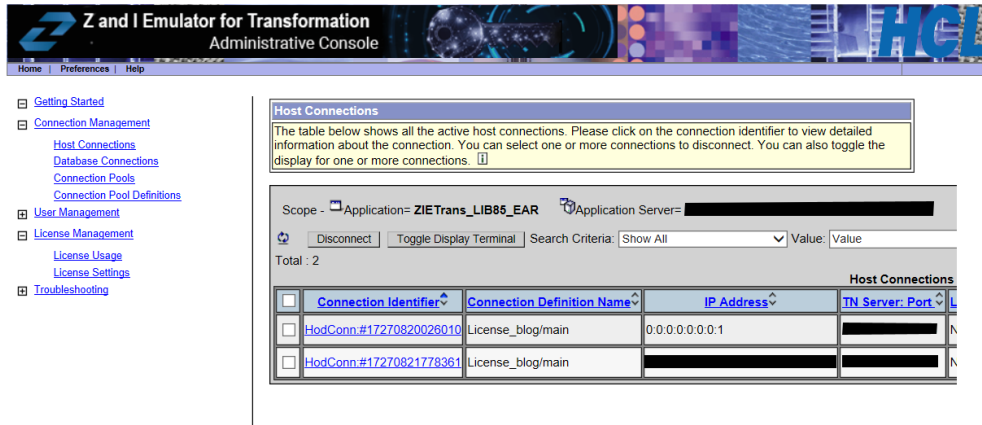


Figure 1 ZIE\_Trans\_Admin - Host Connections

## Scenario 1: Using Multiple Tabs in a Standard Browser

- In a standard browser window, only one license count is consumed, even when multiple tabs are in use.
  - Example:* When accessing the **License\_blog ZTrans Project** in a regular Chrome browser with multiple tabs, only a single license is counted.

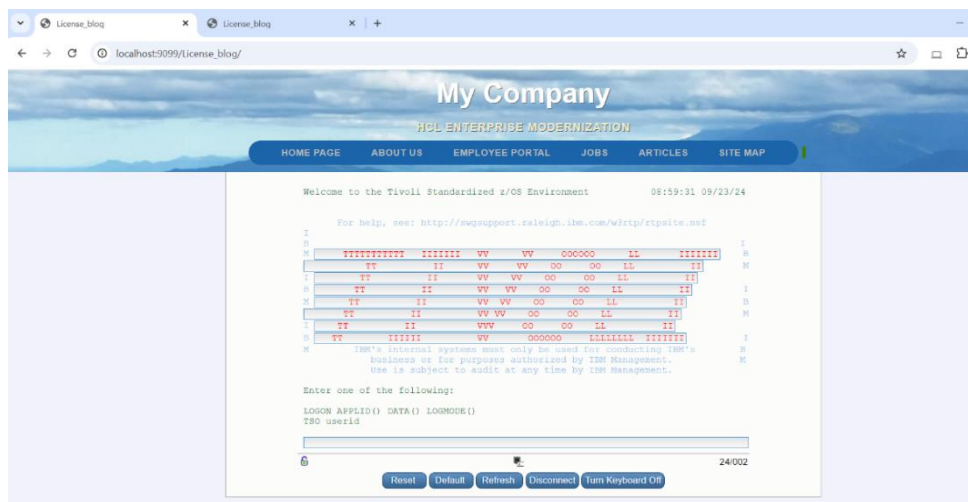


Figure 2 Multiple sessions - normal browser

- Expand **Connection Management** and select **Host Connections**. This allows users to review the details of the host connections.



Figure 3 ZTrans Admin- Host Connection

- Expand **License Management** and click on **License Usage** to check active sessions.
- As mentioned in point- 1, accessing the **License\_blog ZTrans Project** in the same Chrome browser with multiple tabs counts as a single license use.



Figure 4 Normal Browser-License Usage

## Scenario 2: Using Multiple Tabs in an Incognito Chrome Browser

- In an incognito or private browser window, only one license count is consumed, even when multiple tabs are open.
  - Example:* Accessing the **License\_blog ZTrans Project** in an incognito Chrome browser with multiple tabs counts as a single license use.

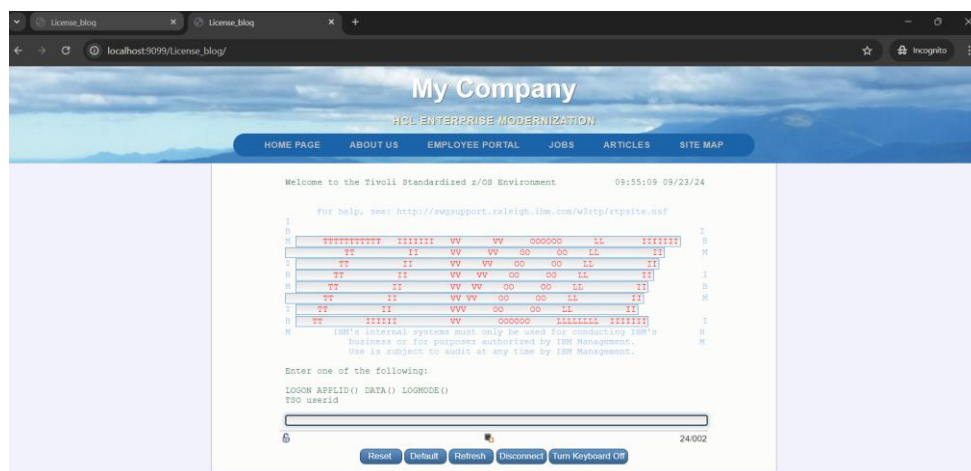


Figure 5 Multiple session - incognito Window

- When accessing the **License\_blog ZTrans Project** in an incognito Chrome browser with multiple tabs, only one license is counted.

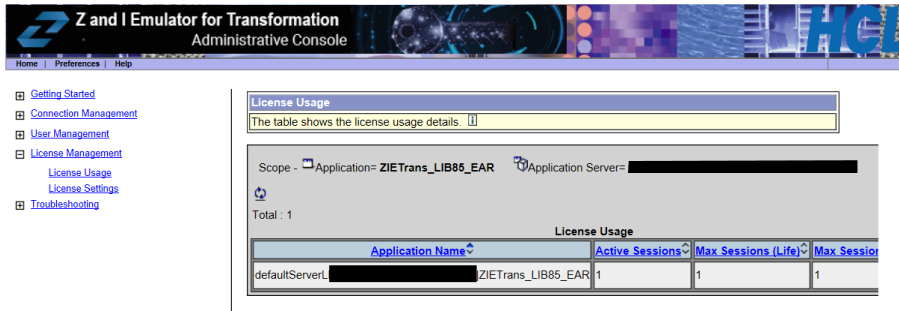


Figure 6 Incognito Windows - License Usage

### Scenario 3: Using Two Separate Incognito Chrome Browsers

- For two separate incognito or private browser windows, only one license count is taken.
  - Example: Accessing the **License\_blog ZTrans Project** in two different incognito Chrome browsers will count as a single license.

**Note:** This also applies to private windows in other browsers.

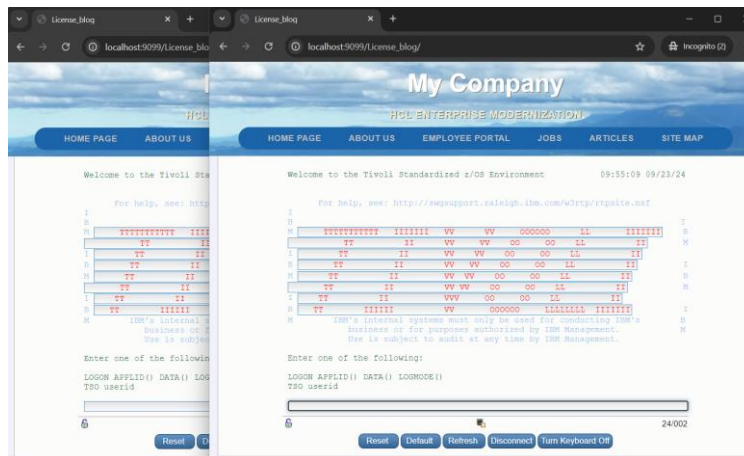


Figure 7 Incognito Windows -separate

- In this case, the license count remains one for two separate sessions in two different incognito windows within the same browser.

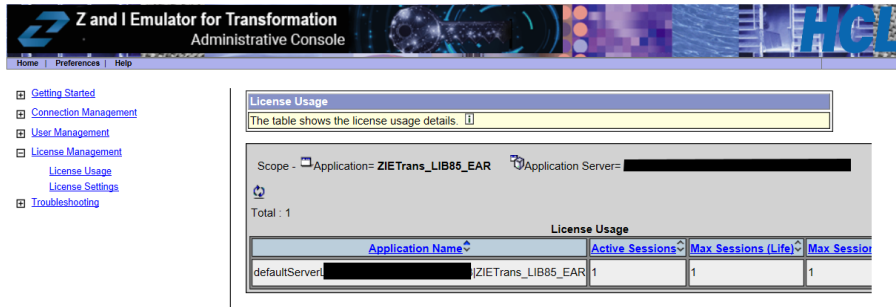


Figure 8 Multiple Incognito Windows - License Usage

## Scenario 4: Using Two Separate Normal Chrome Browser Windows

- For two separate normal browser windows, only one license is counted.
  - Example: Accessing the **License\_blog ZTrans Project** in two different Chrome browser windows will count as a single license.

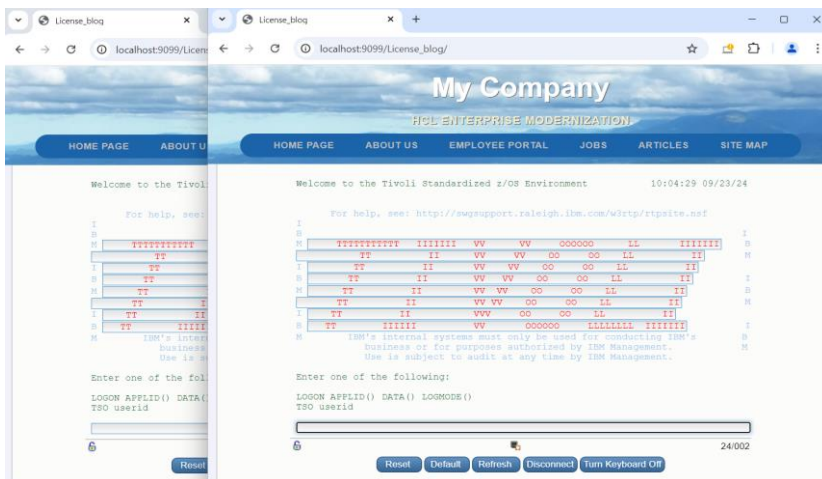


Figure 9 Multiple Normal Chrome windows

- In this case, the license count remains one for two separate sessions in two different normal windows of the same browser.

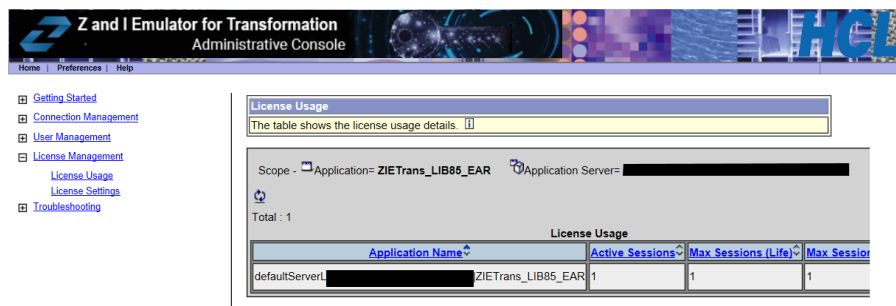


Figure 10 Multiple browser windows - License Usage

## Scenario 5: One Session in a Normal Chrome Browser and One Session in an Incognito Chrome Browser

# HCLSoftware

1. There will be two separate sessions, one in a normal Chrome browser and another in an incognito Chrome browser.
  - o *Example: Accessing the License\_blog ZTrans Project* in two different browsers, one in Edge and the other in Chrome, will count as two separate sessions.

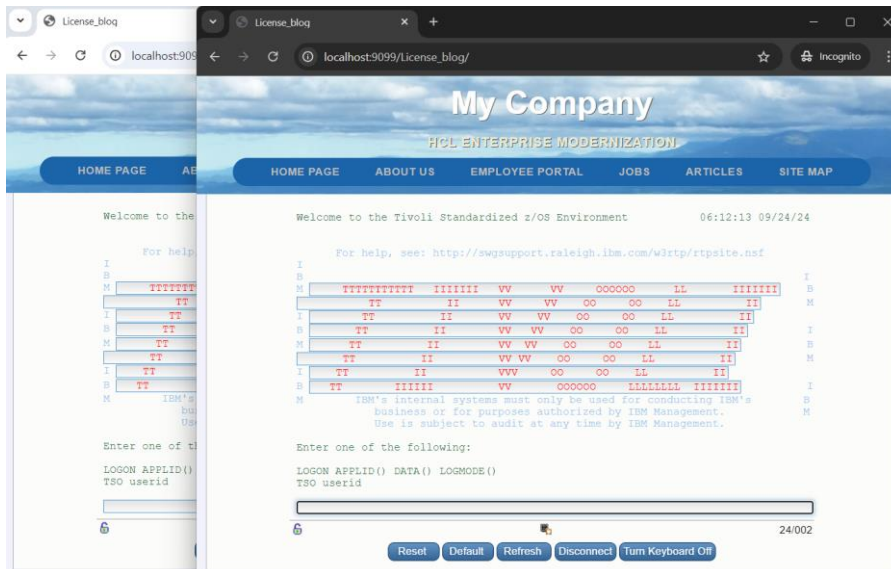


Figure 11 Normal and Incognito window

2. Two active sessions, one in a normal browser window and the other in an incognito browser window, will be treated as separate instances and will require two license counts.

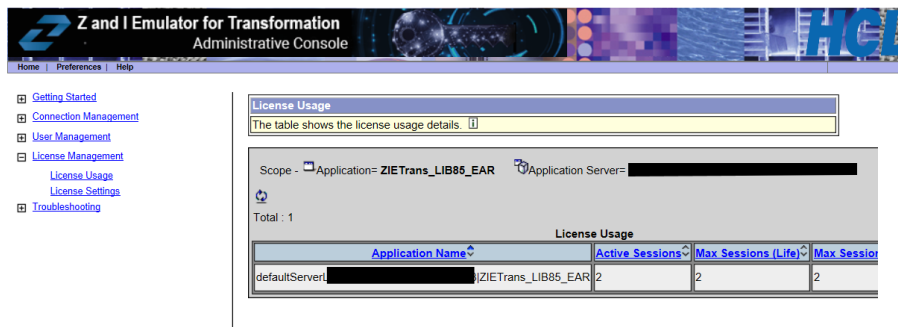


Figure 12 Normal and Incognito Windows - License Usage

## Scenario 6: Accessing the Host Session in Two Different Browsers

1. For this scenario, one session is accessed in the Chrome browser and another in the Edge browser.

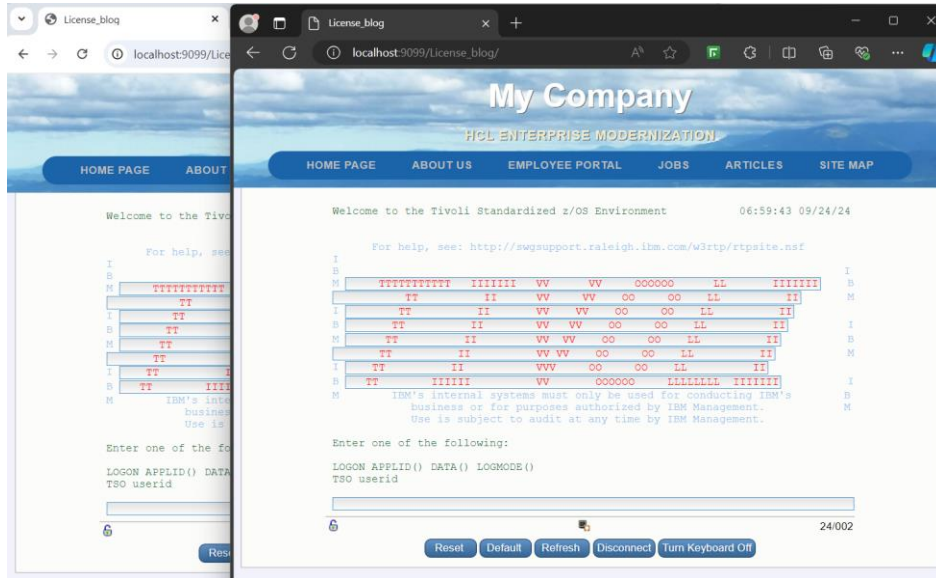


Figure 13 Accessing in Two different Browser

2. This will be treated as two separate host connections, resulting in two license counts.

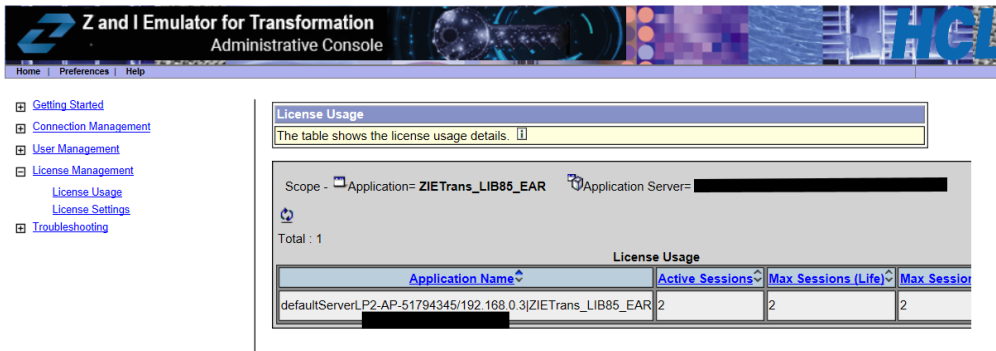


Figure 14 Two different Browser - License Usage

## Scenario 7: Two Chrome Browsers Logged In with Two Different User Accounts

1. For two separate normal windows with different user accounts, two license counts will be applied.
  - o Example: Accessing the **License\_blog ZTrans Project** in two different Chrome browsers, each logged in with a different user account, will result in two license counts.

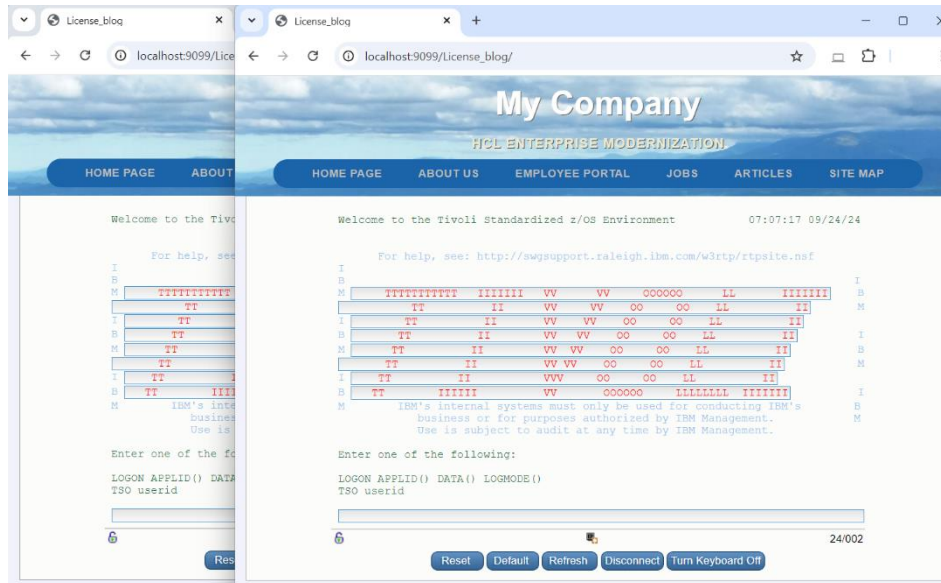


Figure 15 Two user accounts with same browser

2. Since it involves two different user accounts, two separate host connections will be considered.

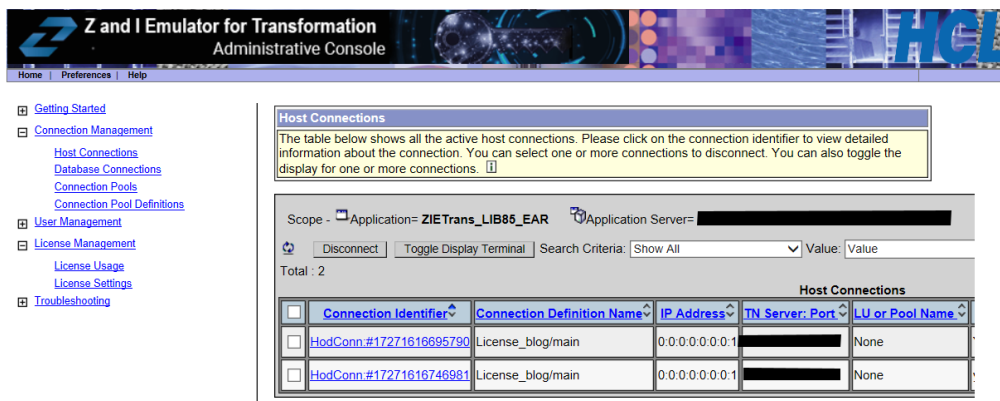


Figure 16 Two host connections - Host Connections

3. Since there are two different host connections, two licenses will be consumed.



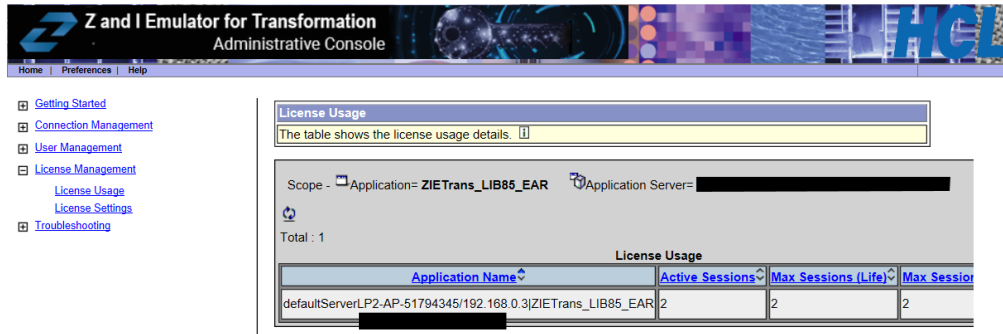


Figure 17 Two-user account access - License Usage

## Summary:

Effective license management is essential for organizations to ensure compliance, optimize costs, and improve operational efficiency. A centralized license management system simplifies operations by allowing administrators to manage all licenses from a single interface, reducing complexity and enhancing productivity. It provides easy access to license information and status, enabling faster decision-making and issue resolution. Additionally, the system tracks license assignments to users, streamlining user access management. By integrating license management with user roles and permissions, organizations can ensure that only authorized users can access specific software or features, thereby improving security and control. The ZIETRANS Admin Console plays a key role in effectively managing licenses for the ZIETRANS project.

## Author Details:

### Sathiya Priya

Consultant at Lab Services

SathiyaPriya is a Consultant at Lab Services at HCLSoftware with 5.5 years of experience. She is a member of HCL ZIE Mainframe Lab Services and is currently involved in HCL ZIE Product testing.



