

ZIEWIN Host Secure Connection



Summary

This document explains how to use Z and I Emulator for Windows FTP Client with a secure host connection.

Introduction

The Z and I Emulator for Windows FTP client uses the File Transfer Protocol (FTP) to transfer files between local and remote machines. It allows uploading and downloading files and navigating directories on both the local and remote systems.

The Personal Communications FTP client supports the following servers:

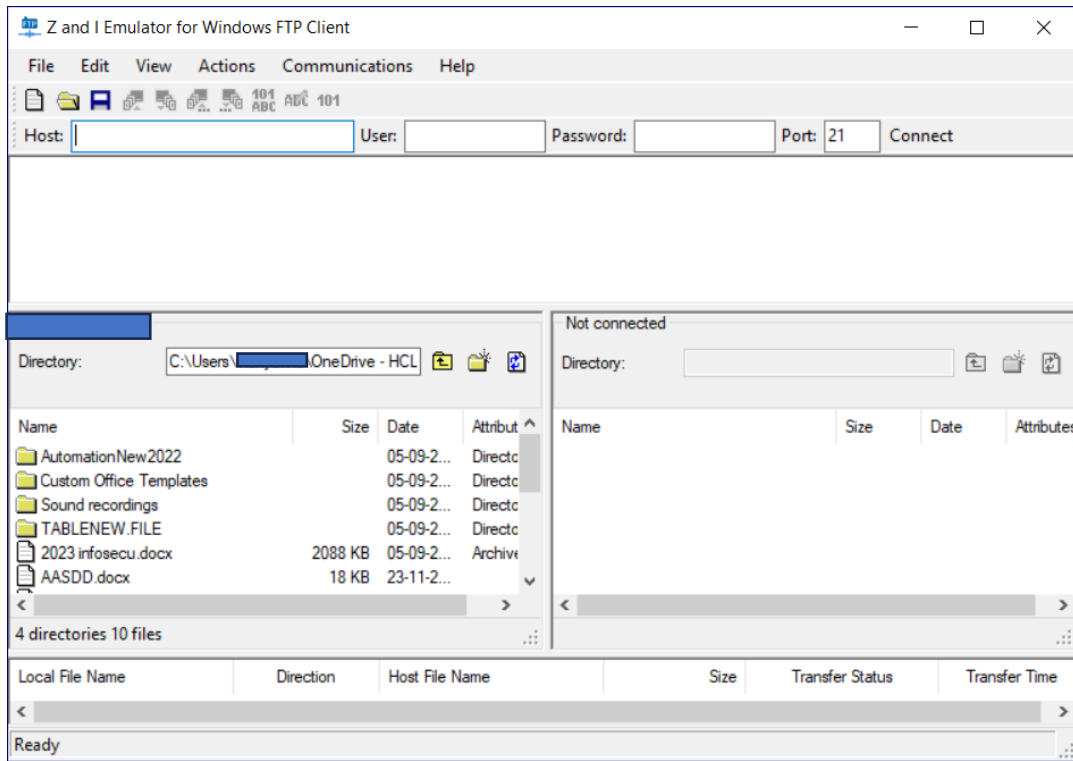
- UNIX
- iSeries® (AS/400®)
- Windows
- z/OS® MVS™
- VMS

Pre-requisite:

Ensure the following prerequisites are completed before proceeding:

1. Install HCL ZIE for Windows version 64 (64-bit or 32-bit) on your machine.
2. Go to *Start Menu* -> *HCL ZIE for Windows* -> *FTP Client* and run it as an Administrator."

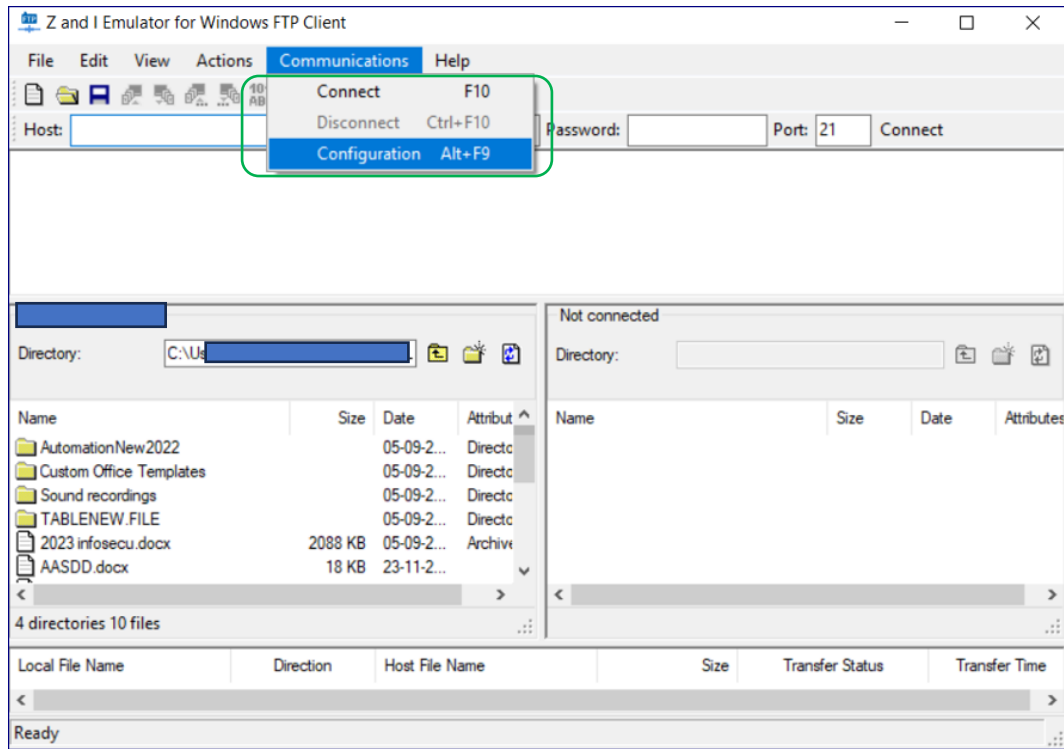
HCLSoftware



FTP Client Connect to Host

1. Provide Host IP and credentials.
2. Navigate to *Communications->Configuration*.
3. Configuration displays the FTP Configuration dialog, where you can define configuration settings for client use.

HCLSoftware



SSL (Secure Socket Layer)

The SSL tab allows the user to edit security settings (SSL/TLS) for the FTP protocol. Only Explicit mode of SSL/TLS is supported.

Enable Security

Select **Enable Security** if you want to use SSL/TLS for this session.

Client Authentication

1. Send Trusted Certificate

Select *Send Certificate Trusted by Server* to use a default certificate or one trusted by the server from the Client Certificate store.

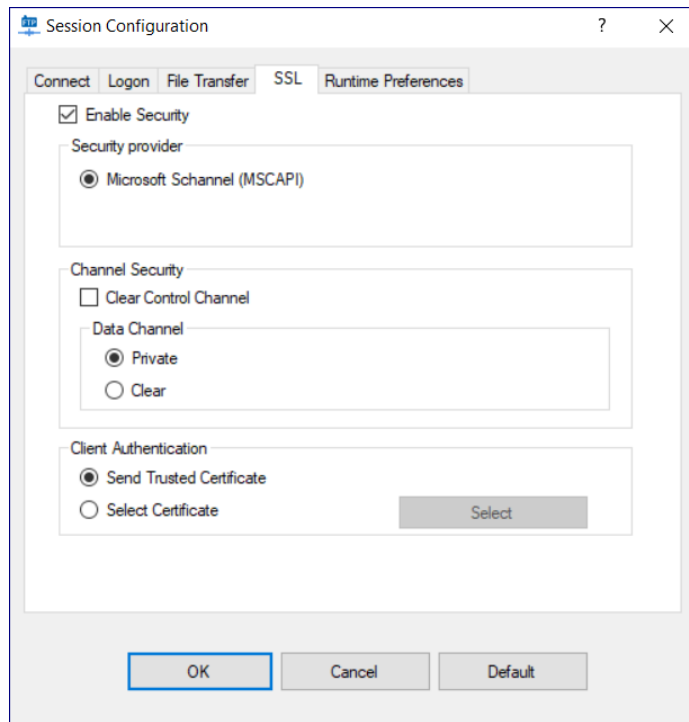
2. Select Certificate

Choose this option to select a Client Certificate or be prompted at runtime to choose one.

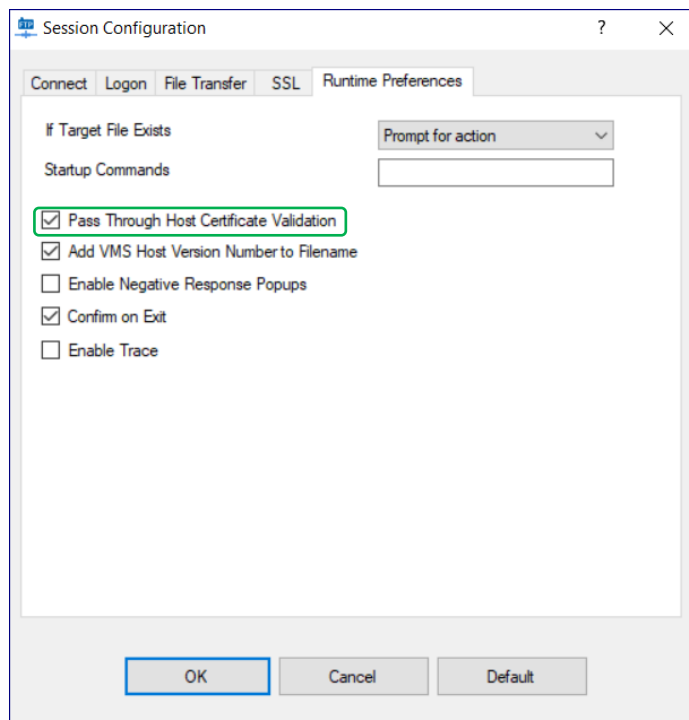
HCLSoftware

Session Configuration

1. Navigate to the SSL tab and select the **Enable Security** check box.



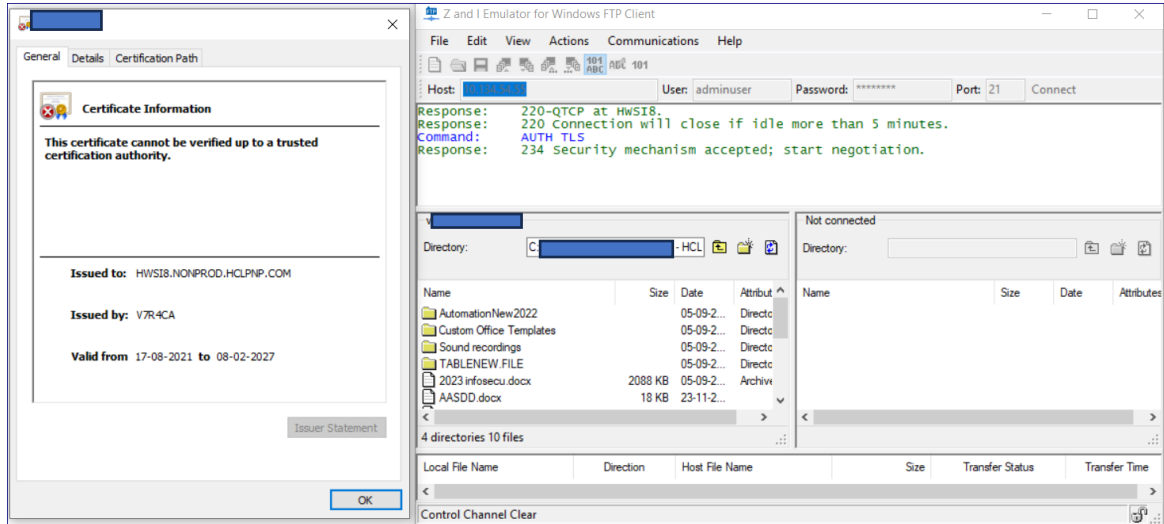
2. Navigate to the **Runtime Preferences** Tab and select the “Pass through Host certificate validation” (Automatically taking the certificate from certmgr.msc)



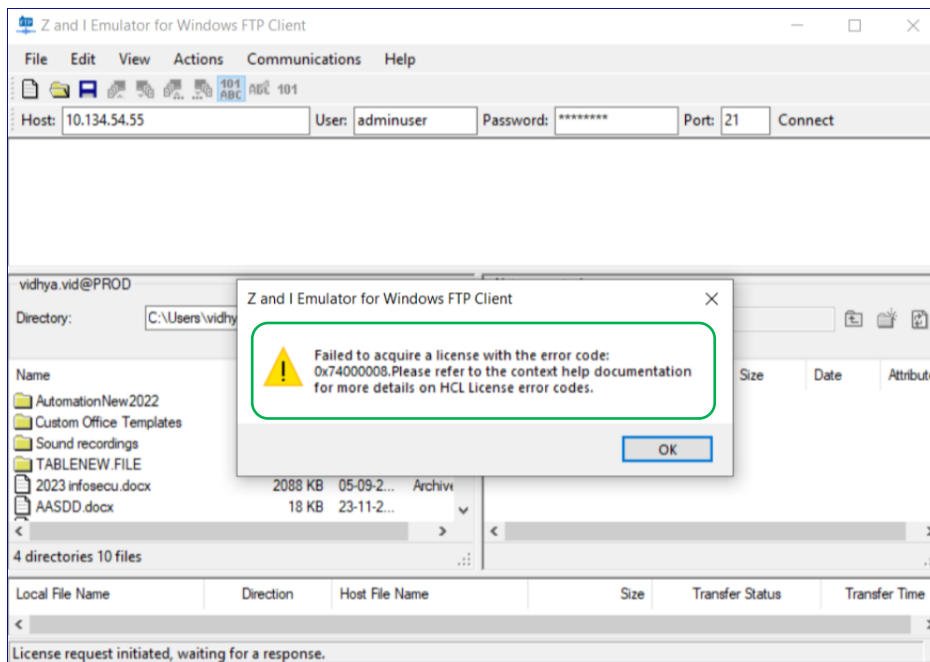
HCLSoftware

3. The **Certificate** dialogue window appears and click **OK**.

NOTE: In previous versions, users needed to install the client certificate in the Trusted Root using the Certificate Manager. To do this, open the Certificate Manager (WIN+R), navigate to 'Trusted Root,' and install the certificate.



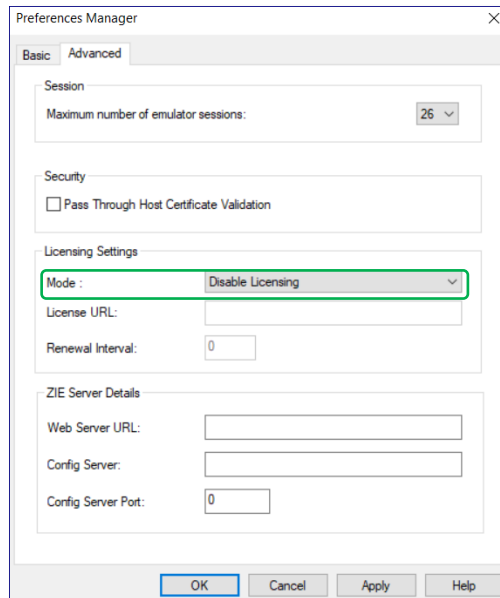
Note: The user will encounter the issues listed below if they lack a licence.



HCLSoftware

Solution:

Enter "userpm" in Run, click the Advanced tab, and then click the **License** options button to change the mode to Disable Licensing.

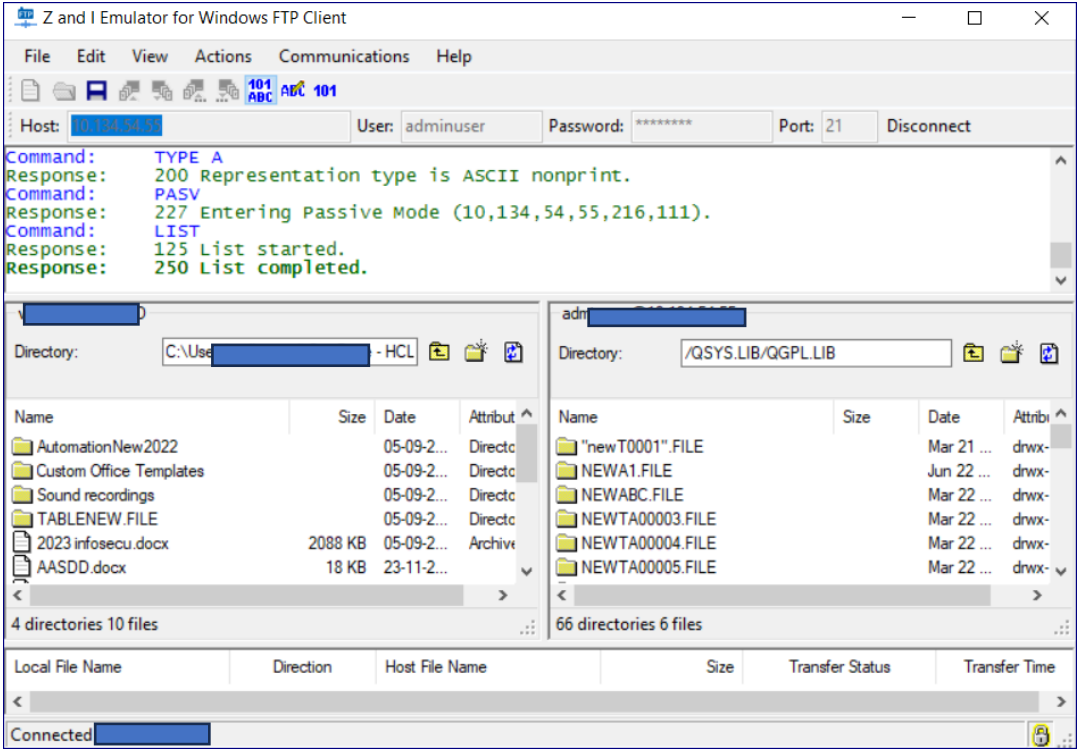


HCLSoftware

Host File Transfer with Secure Connection:

1. Verify the secure connection by checking for the lock symbol next to the host.
2. Host directories will appear on the right side of the window.

Files can be sent and received over this secure connection.



Conclusion:

This guide outlines the steps to create a secure connection using a Z and I Emulator for Windows FTP client session, enabling users to transmit files to the server in an encrypted format.

HCLSoftware

Author Details:

Vidhya

Vidhya is an Associate consultant at HCLSoftware with 5.5 years of experience. She is a member of HCL ZIE Mainframe Lab Services and is currently involved in HCL ZIE Product services.

